

# GreenInCities

## Management and development plan for the Longinojanpuisto park

### Summary

Anu Kiiskinen

**GreenIn  
Cities**

# Contents

1.

**Management and development plan for the Longinojanpuisto park**

2.

**Longinojanpuisto interventions 2026**

3.

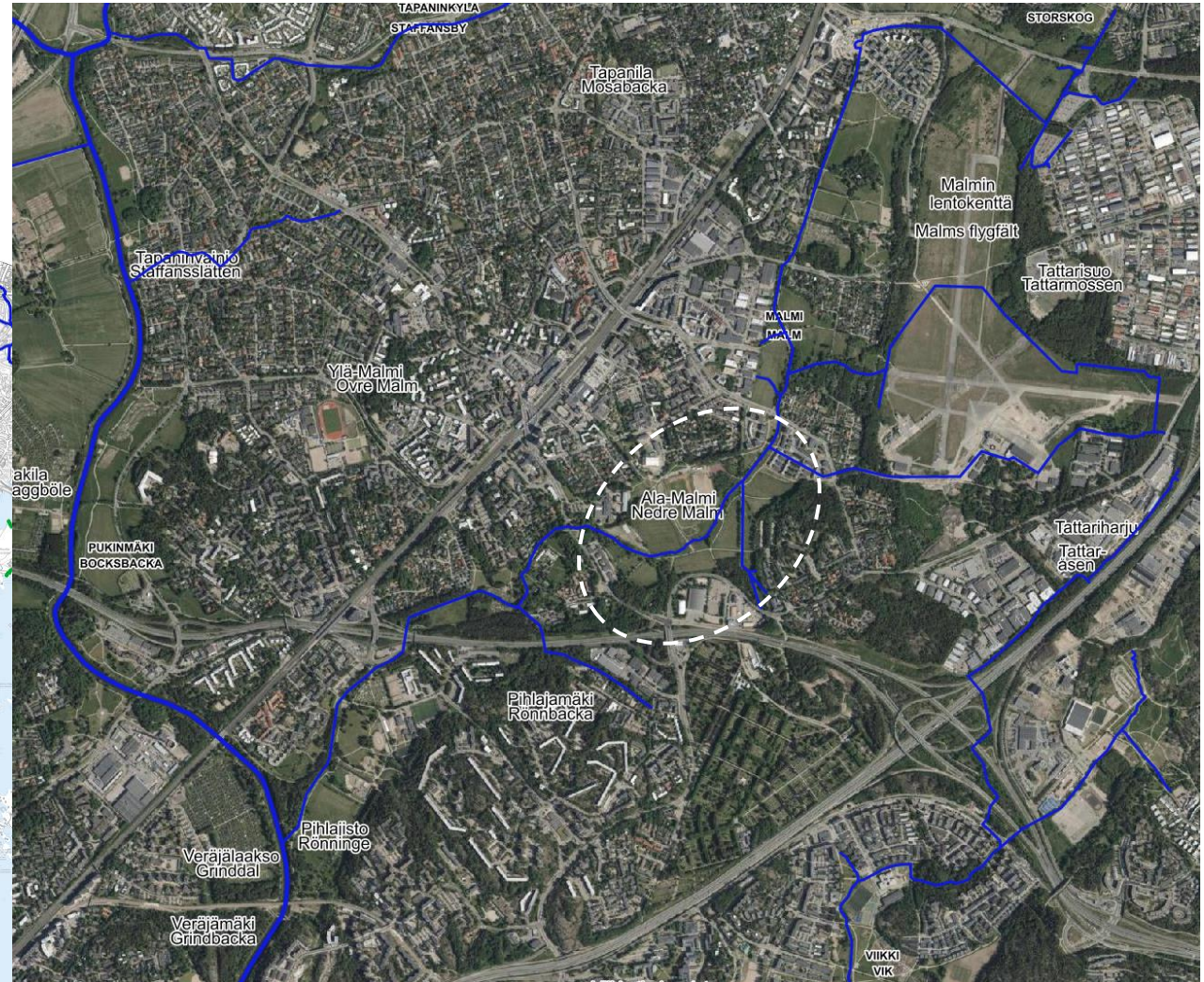
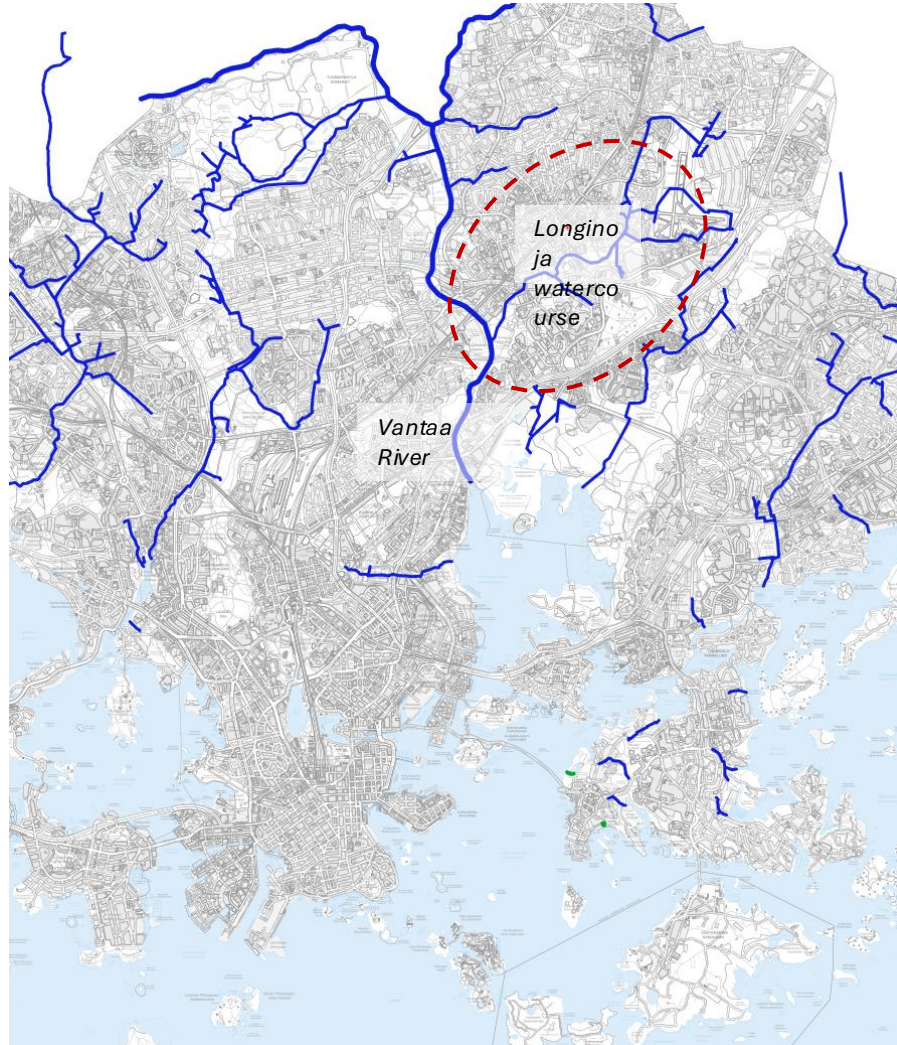
**Meadow management pilot projects**

4.

**Measurement of results in 2027**

# 1. Management and development plan for the Longinojanpuisto park

The location of the Longinoja watercourse and the Longinojanpuisto park in Malmi and the watercourse joining the Vantaa River.



# Summary

- The aim of the management and development plan for the Longinojanpuisto park has been to devise a range of measures for the area of the Longinojanpuisto park in Helsinki that support the park's appeal and biodiversity using nature-based solutions. As a result of the management and development plan, measures are proposed for developing the area of the Longinojanpuisto park.
- Data-driven methods and tools have been used in the planning process. The planning area and draft plans have been analysed using various calculation methods, the results of which have guided the planning process. Using data-driven methods, it has been possible to identify and implement solutions that increase and support biodiversity.
- Involving local residents and park users has also been part of the planning process. Extensive information on user experiences and preferences has been collected from participants and residents in Malmi to help with the planning process. During the planning phase, two events were held for residents to provide them with the opportunity to influence the content of the management and development plan. The results from the events have been used in the planning of the measures for the management and development plan.
- The measures set out in the management and development plan will enhance the biodiversity of the Longinojanpuisto park, increasing its appeal and recreational use with the aid of nature-based solutions. The measures also aim to improve the water quality and ecological status of the Longinoja watercourse flowing through the park and support the establishment of the Longinoja nature reserve.
- **The management and development plan for the Longinojanpuisto park will be updated in 2026 to include guidelines on the park's development and the management of its meadows.**



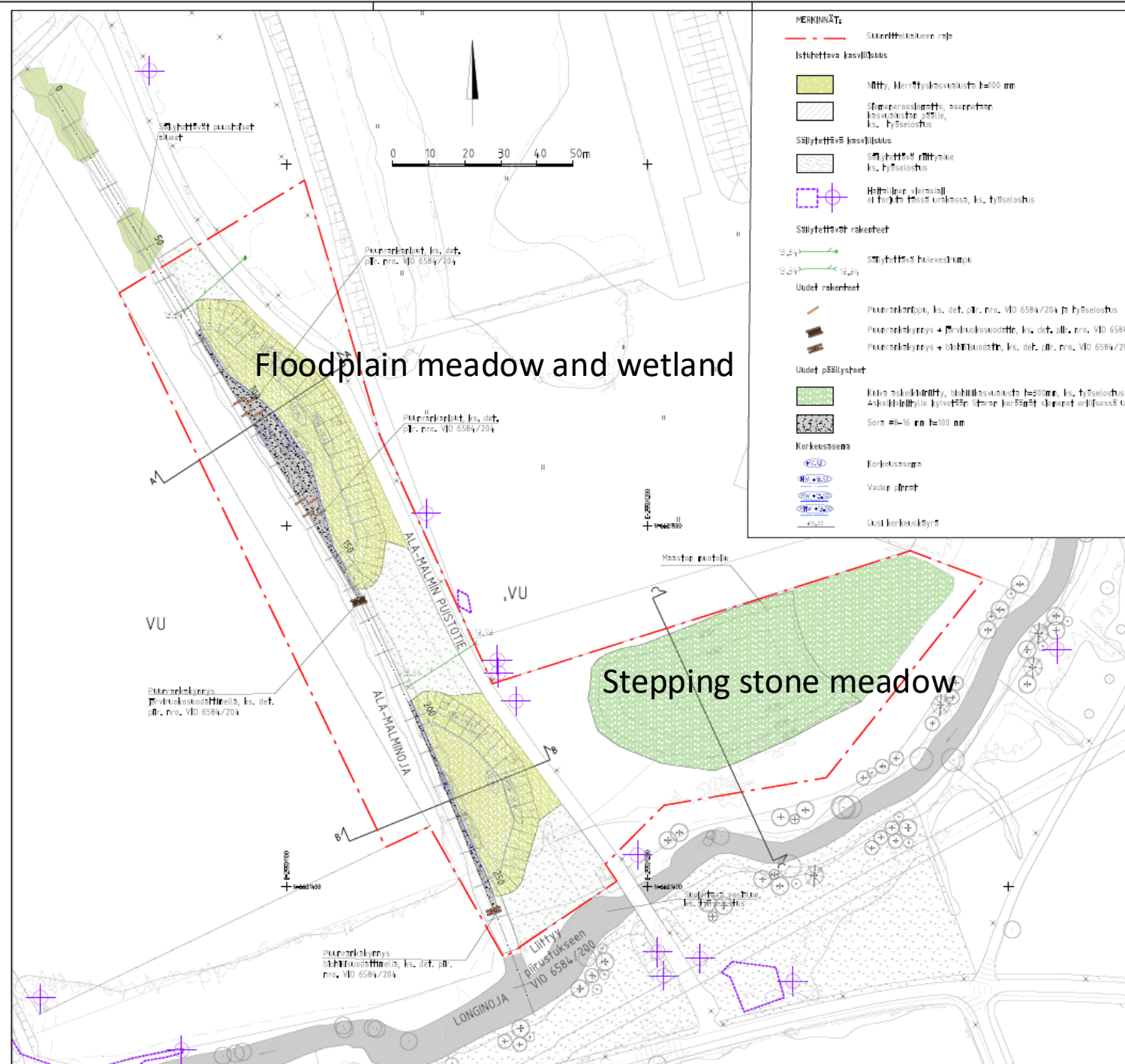
# 2. Longinojanpuisto interventions 2026



# Longinojanpuisto measures 2026

- Meadow pilot project
- Stepping stone meadow on top of a clay storage area
- Compensation for the meadow species in Malminkenttä
- Biochar pilot project on nutrient regulation
- Extension of the flying squirrel corridor and increase of shade along the Longinoja watercourse

- Wetland and floodplain meadow
- Stepping stone meadow



Helsinki Kaupunkiympäristön toimiala		www.hel.fi	
28. Maalim. 382, Ala-Malmi			
<b>LONGINJÄNPUISTO</b>			
Ala-Malmintien			
Istuksen ja varusteluosuus			
1500	vjo 6584/201		
18.12.2024	18.12.2024	18.12.2024	18.12.2024
18.12.2024	18.12.2024	18.12.2024	18.12.2024
18.12.2024	18.12.2024	18.12.2024	18.12.2024
18.12.2024	18.12.2024	18.12.2024	18.12.2024
18.12.2024	18.12.2024	18.12.2024	18.12.2024
18.12.2024	18.12.2024	18.12.2024	18.12.2024
18.12.2024	18.12.2024	18.12.2024	18.12.2024
18.12.2024	18.12.2024	18.12.2024	18.12.2024



# 3. Meadow management pilot projects

# Management pilot projects in the Longinoja meadows

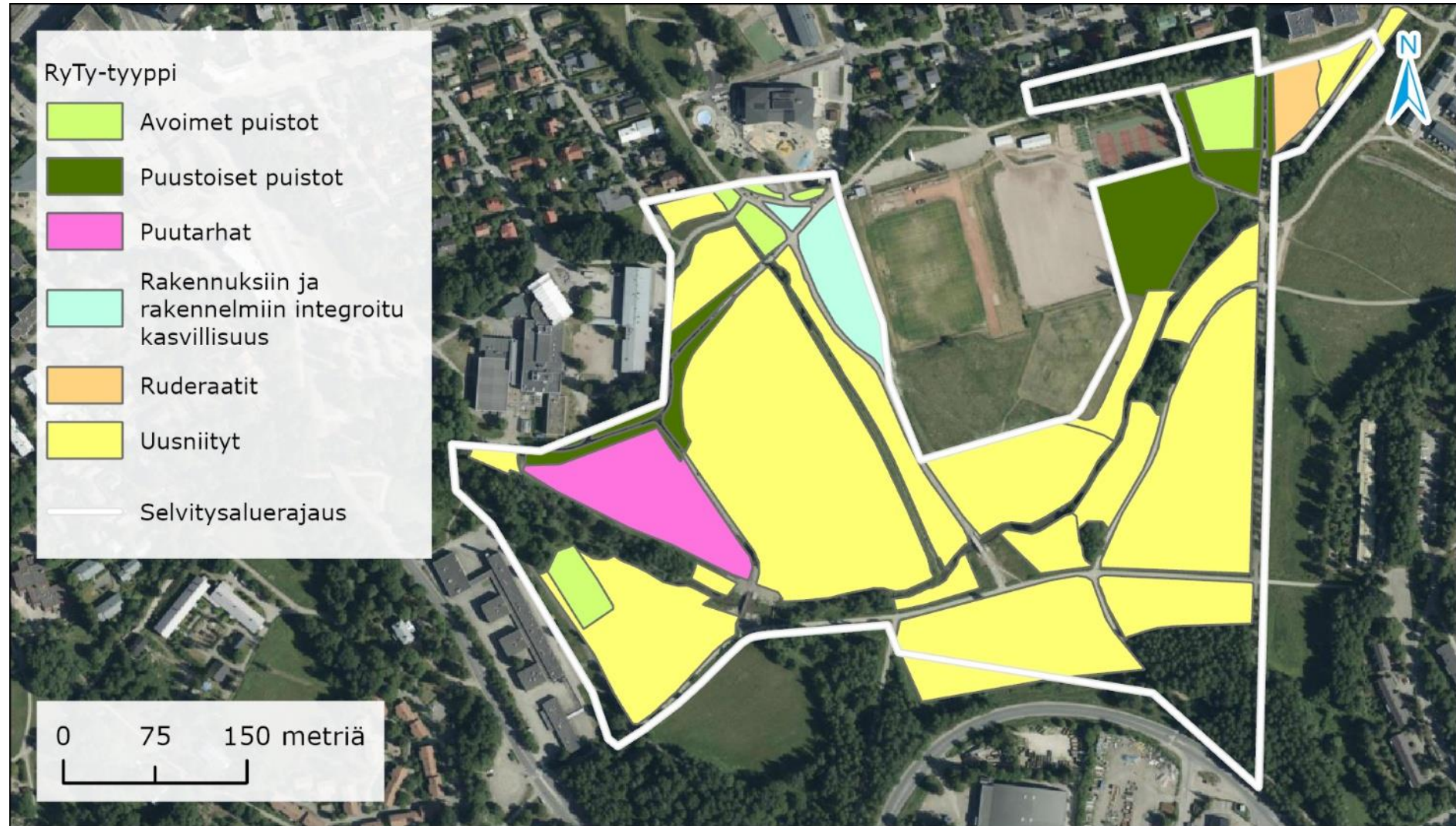
## Objectives

- Diversifying flowering meadow vegetation and reducing the proportion of grasses
- Increasing the number of pollinators
- Identifying cost-effective methods for managing newly-established meadows and increasing biodiversity
- Methods for controlling invasive alien species
- Increasing the number of native species and making use of seed banks
- Timetable 2026–2027



# Biodiversity of newly-established meadows

Changing the method used for managing newly-established meadows aims to improve the ecological quality of the meadows and increase biodiversity by diversifying the flora and favouring species that benefit pollinating insects, for example.



# Meadow management pilot projects

Based on the nature surveys carried out in the Longinojanpuisto park, the majority of the species in the meadows are grasses. The plant species typical of the area include meadow foxtail (*Alopecurus pratensis*), which is the dominant species in most compartments of the park, timothy grass (*Phleum pratense*), red fescue (*Festuca rubra*), scentless mayweed (*Tripleurospermum inodorum*), creeping thistle (*Cirsium arvense*), alsike clover (*Trifolium hybridum*), bird's foot trefoil (*Lotus corniculatus*) and meadow vetchling (*Lathyrus pratensis*).<sup>2.5.4</sup> The species composition is typical given the clay-rich soil and the area's agricultural history.

Changing the method used for managing newly-established meadows aims to improve the ecological quality of the meadows and increase biodiversity by diversifying the flora and favouring species that benefit pollinating insects, for example.

The sites along the Ala-Malmin puistotie road, where new management methods are being piloted, consist of natural meadows that are managed as landscape fields and arable land.

The ecological quality of meadows is typically improved by soil depletion in the meadow area. In soil depletion, the grass clippings are collected and cleared away. The grass clippings are left to dry in place before being cleared away, so that the ripe seeds fall off and remain in the meadow. Drying the grass clippings also reduces the volume and weight of the clippings to be removed, which makes it easier to organise their collection. In Helsinki, the collection of grass clippings is relatively expensive.

Developing new management methods also involves engaging residents and associations in nature management, for example by organising volunteer activity focused on themes of meadow management. Such topics may include seed collection and sowing, as well as clipping grass and raking the clippings.

# 4. Measurement of results in 2027

# Results will be measured in 2027



Photograph Anu Kiiskinen

The results of the measures will be assessed during 2027 using a variety of methods. Residents will also be included in the data collection process. The management and development plan for the Longinojanpuisto park provides guidance on the next steps for the pilot sites. It takes years for meadows to develop, and it is important to ensure the continuity of their management.

**GreenIN  
Cities**